



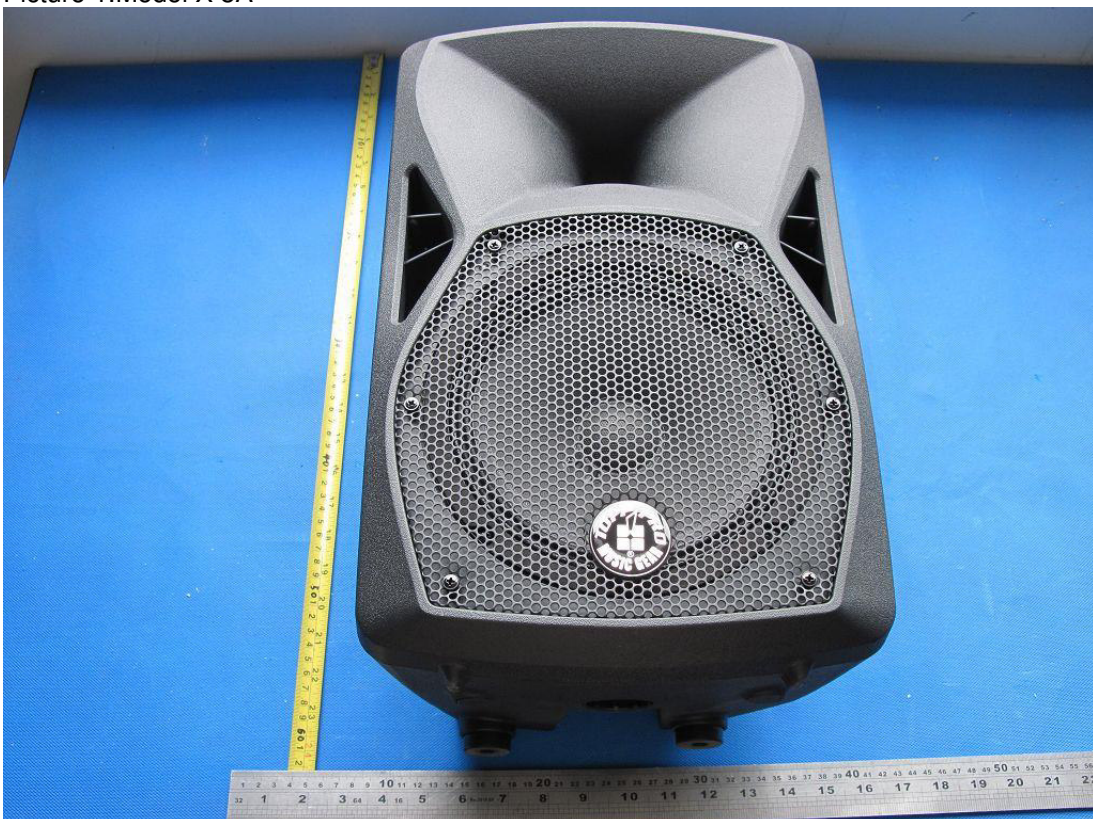
<b>Prüfbericht-Nr.:</b> <i>Test Report No.:</i>	<b>CN21LWOE 001</b>	<b>Auftrags-Nr.:</b> <i>Order No.:</i>	<b>170052232</b>	Seite 1 von 1 Page 1 of 1
<b>Kunden-Referenz-Nr.:</b> <i>Client Reference No.:</i>	N/A	<b>Auftragsdatum:</b> <i>Order date:</i>	2020-09-27	
<b>Auftraggeber:</b> <i>Client:</i>	<b>Dongguan Jingheng Electron Co., Ltd.</b> Shenshan Industrial City, Hengli Town, Dongguan City, Guangdong 523465, P.R. China			
<b>Prüfgegenstand:</b> <i>Test item:</i>	Active Speaker			
<b>Bezeichnung / Typ-Nr.:</b> <i>Identification / Type No.:</i>	X 8A, X 10A, OWL-8A, OWL-10A			
<b>Auftrags-Inhalt:</b> <i>Order content:</i>	LVD Approval			
<b>Prüfgrundlage:</b> <i>Test specification:</i>	EN 62368-1: 2014+A11			
<b>Wareneingangsdatum:</b> <i>Date of receipt:</i>	N/A	See Photo Documentation for detail.		
<b>Prüfmuster-Nr.:</b> <i>Test sample No.:</i>	N/A			
<b>Prüfzeitraum:</b> <i>Testing period:</i>	N/A			
<b>Ort der Prüfung:</b> <i>Place of testing:</i>	N/A			
<b>Prüflaboratorium:</b> <i>Testing laboratory:</i>	TÜV Rheinland (Guangdong) Ltd.			
<b>Prüfergebnis*:</b> <i>Test result*:</i>	Pass			
<b>geprüft von:</b> <i>tested by:</i> Kevin He		<b>kontrolliert von:</b> reviewed <i>by:</i> Susan Zheng		
<b>Datum:</b> <i>Date:</i> 2021-01-13		<b>Datum:</b> <i>Date:</i> 2021-01-13		
<b>Stellung / Position:</b>	Project Engineer	<b>Stellung / Position:</b>	Technical Certifier	
<b>Sonstiges / Other:</b> - TÜV Rheinland LVD approval procedure. - The report is based on CB report no.: NN20R1U9 001, and consider the different requirement between the issued standard EN 62368-1: 2014+A11 and the newest EN 62368-1: 2020+A11 on CB report. Therefore, the EUT deems to fulfill the requirements of standard EN 62368-1: 2014+A11 without further tests.				
<b>Zustand des Prüfgegenstandes bei Anlieferung:</b> <i>Condition of the test item at delivery:</i>		Prüfmuster vollständig und unbeschädigt <i>Test item complete and undamaged</i>		
* Legende:	1 = sehr gut      2 = gut      3 = befriedigend	4 = ausreichend	5 = mangelhaft	
	P(ass) = entspricht o.g. Prüfgrundlage(n)	F(ail) = entspricht nicht o.g. Prüfgrundlage(n)	N/A = nicht anwendbar      N/T = nicht getestet	
Legend:	1 = very good      2 = good      3 = satisfactory	4 = sufficient	5 = poor	
	P(ass) = passed a.m. test specification(s)	F(ail) = failed a.m. test specification(s)	N/A = not applicable      N/T = not tested	
<b>Dieser Prüfbericht bezieht sich nur auf das o.g. Prüfmuster und darf ohne Genehmigung der Prüfstelle nicht auszugsweise vervielfältigt werden. Dieser Bericht berechtigt nicht zur Verwendung eines Prüfzeichens.</b> <i>This test report only relates to the a. m. test sample. Without permission of the test center this test report is not permitted to be duplicated in extracts. This test report does not entitle to carry any test mark.</i>				

Product: Active Speaker

Type Designation: X 8A, X 10A, OWL-8A, OWL-10A



Picture 1. Model X 8A



Picture 2.

Product: Active Speaker

Type Designation: X 8A, X 10A, OWL-8A, OWL-10A



Picture 3.



Picture 4.

Product: Active Speaker

Type Designation: X 8A, X 10A, OWL-8A, OWL-10A



Picture 5.



Picture 6. Model X 10A

Product: Active Speaker

Type Designation: X 8A, X 10A, OWL-8A, OWL-10A



Picture 7.



Picture 8.

Product: Active Speaker

Type Designation: X 8A, X 10A, OWL-8A, OWL-10A



Picture 9.



Picture 10.

Product: Active Speaker

Type Designation: X 8A, X 10A, OWL-8A, OWL-10A



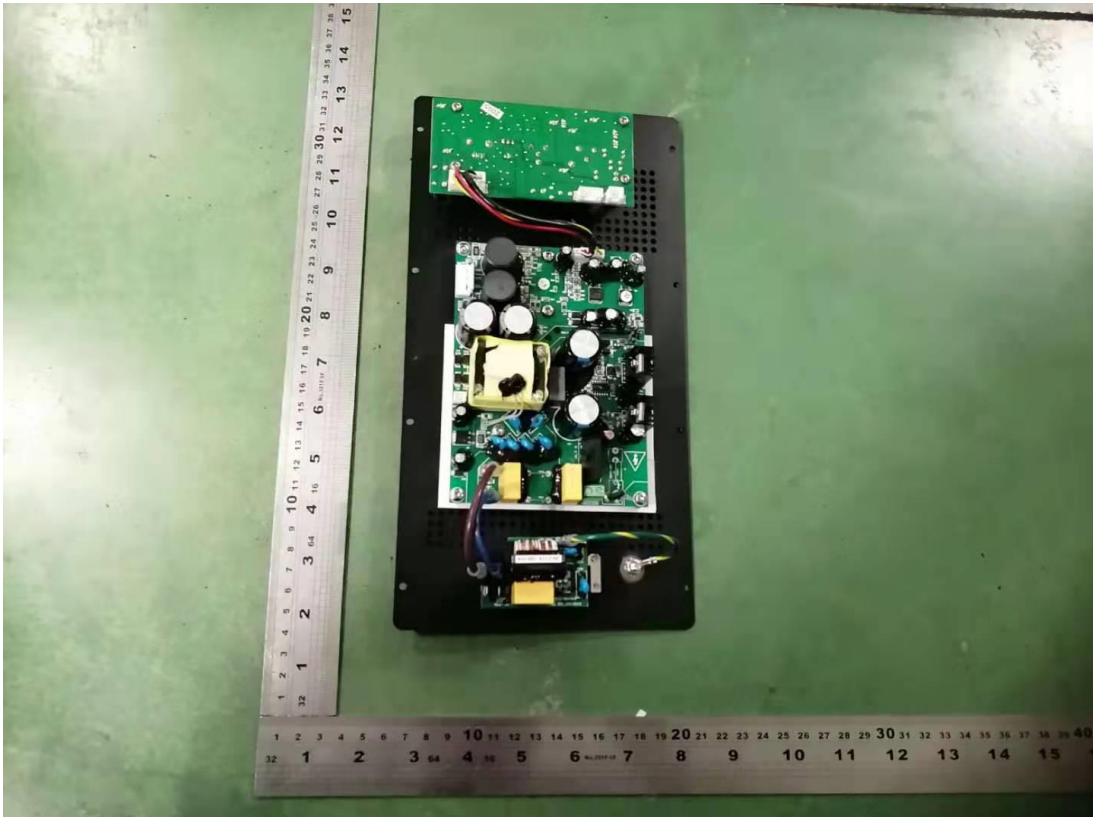
Picture 11.



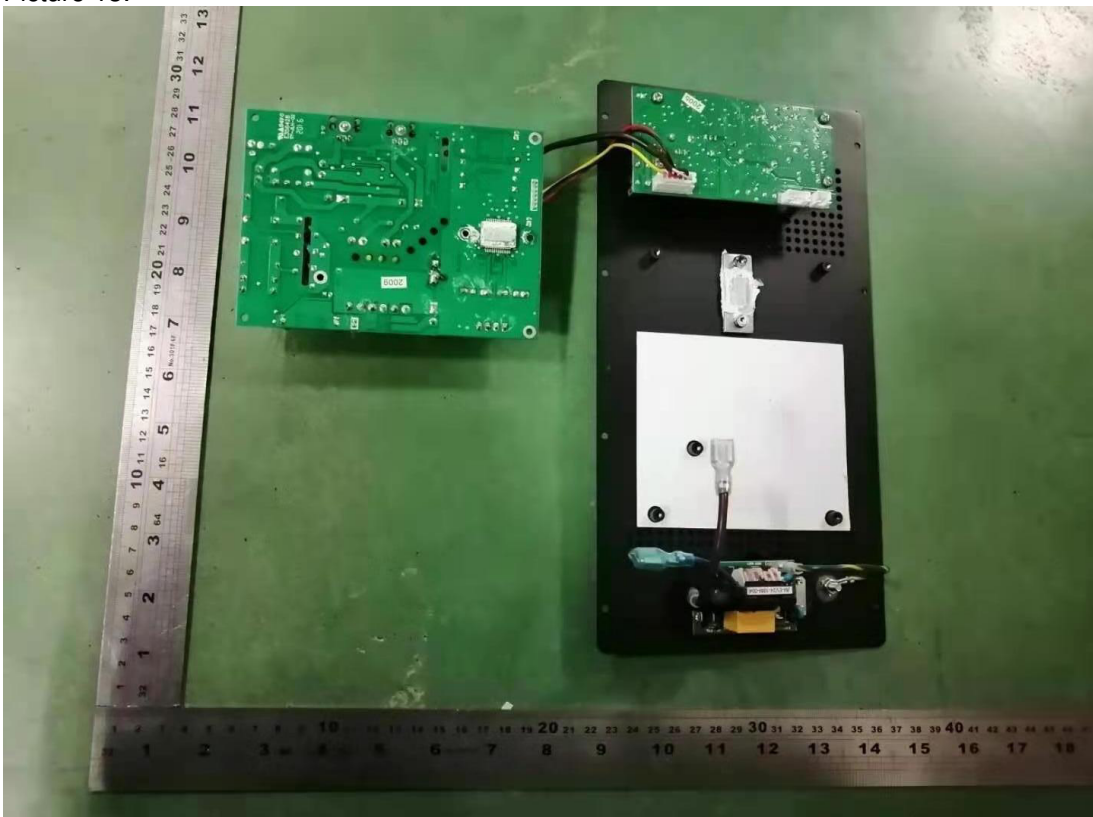
Picture 12.

Product: Active Speaker

Type Designation: X 8A, X 10A, OWL-8A, OWL-10A



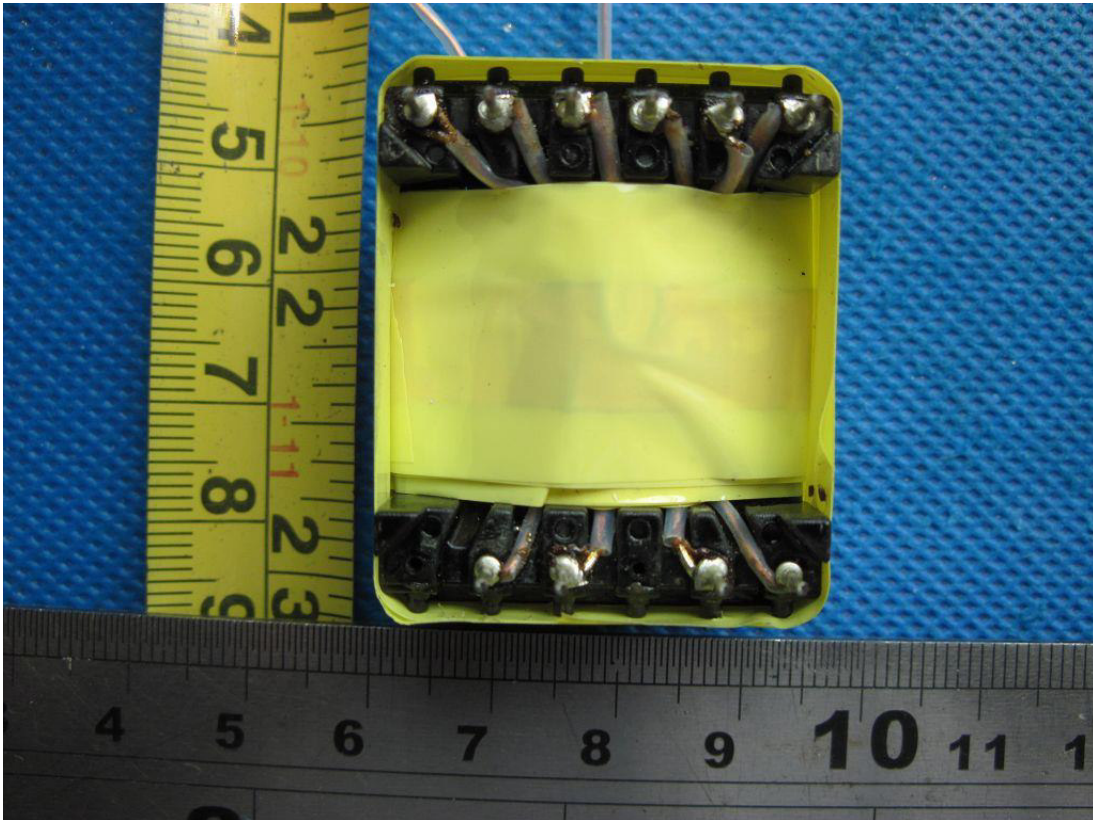
Picture 13.



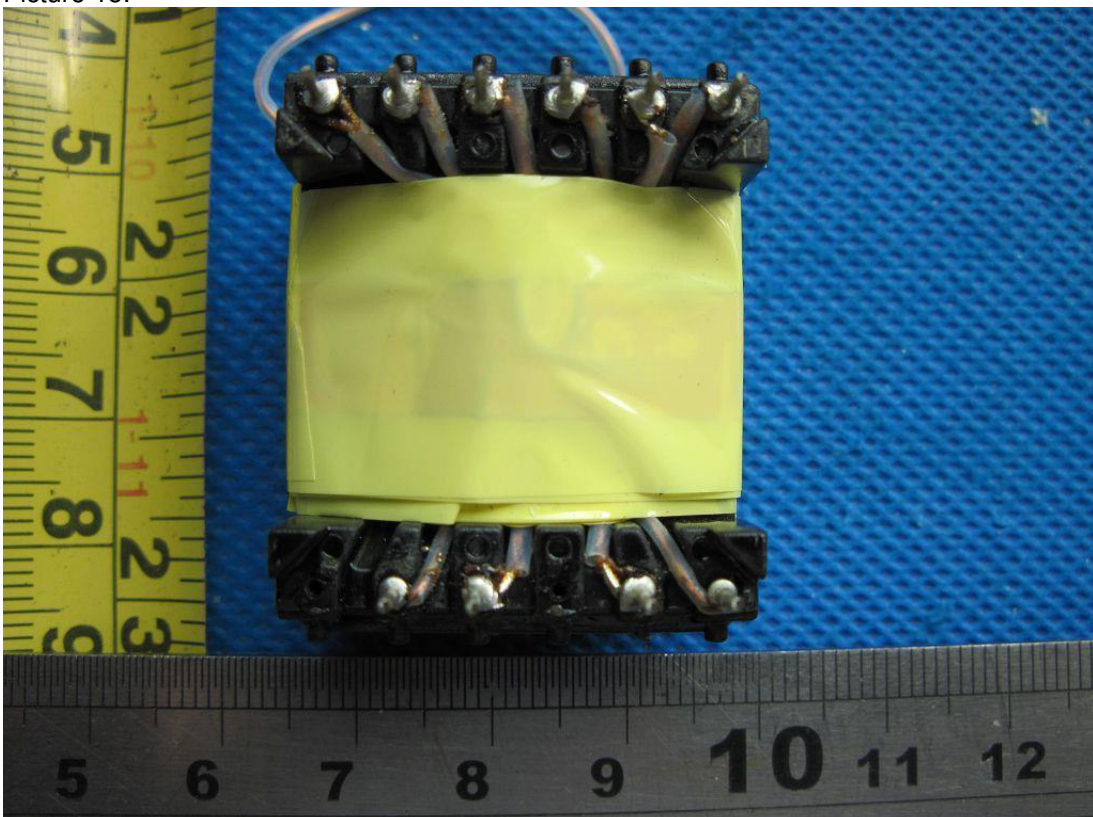
Picture 14.

Product: Active Speaker

Type Designation: X 8A, X 10A, OWL-8A, OWL-10A



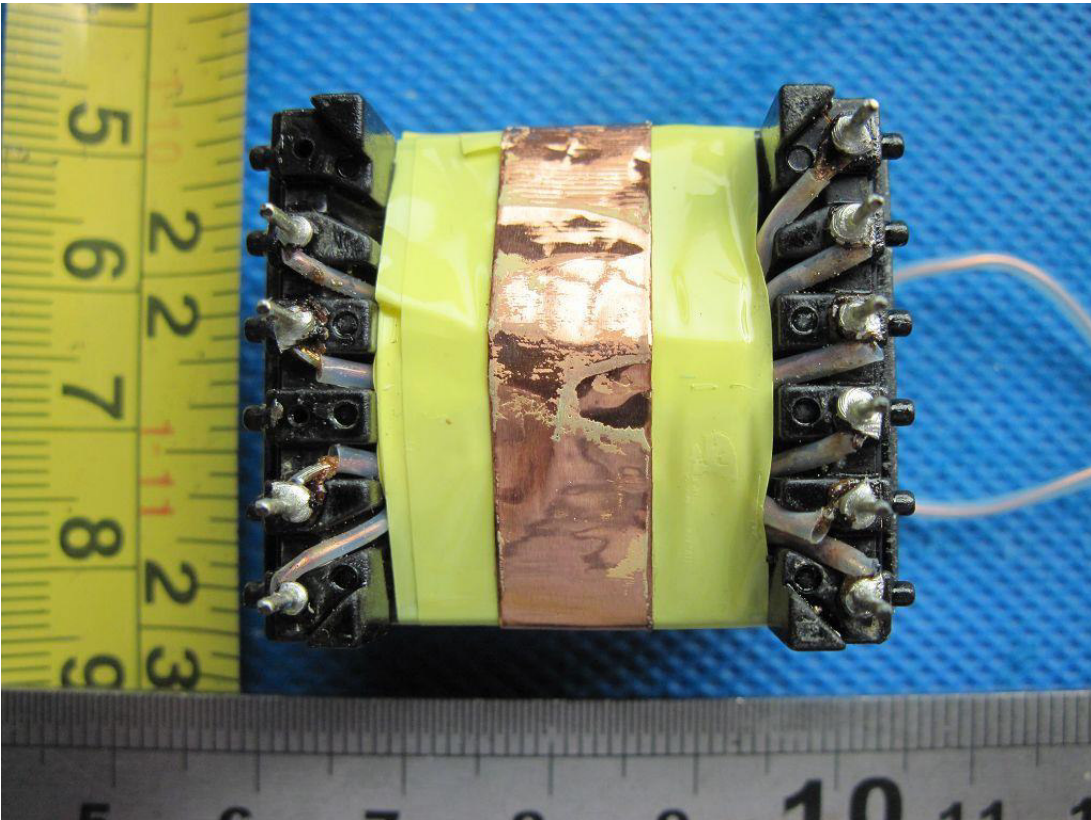
Picture 15.



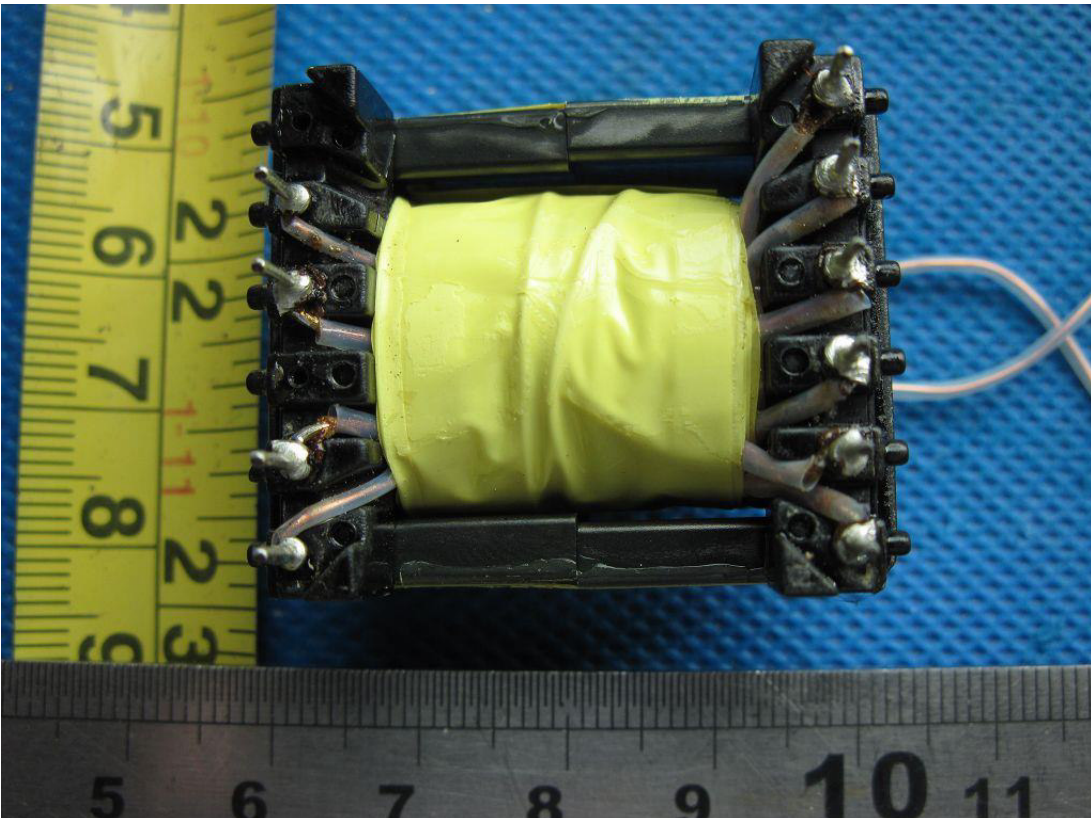
Picture 16.

Product: Active Speaker

Type Designation: X 8A, X 10A, OWL-8A, OWL-10A



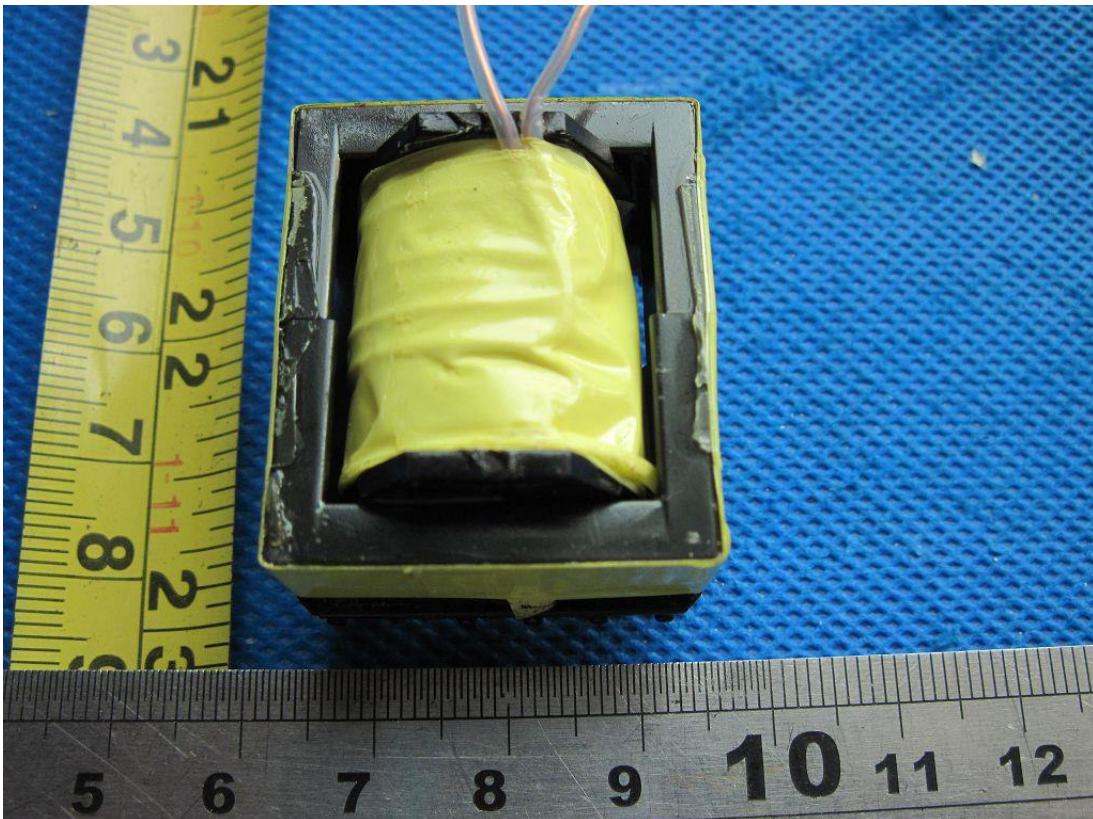
Picture 17.



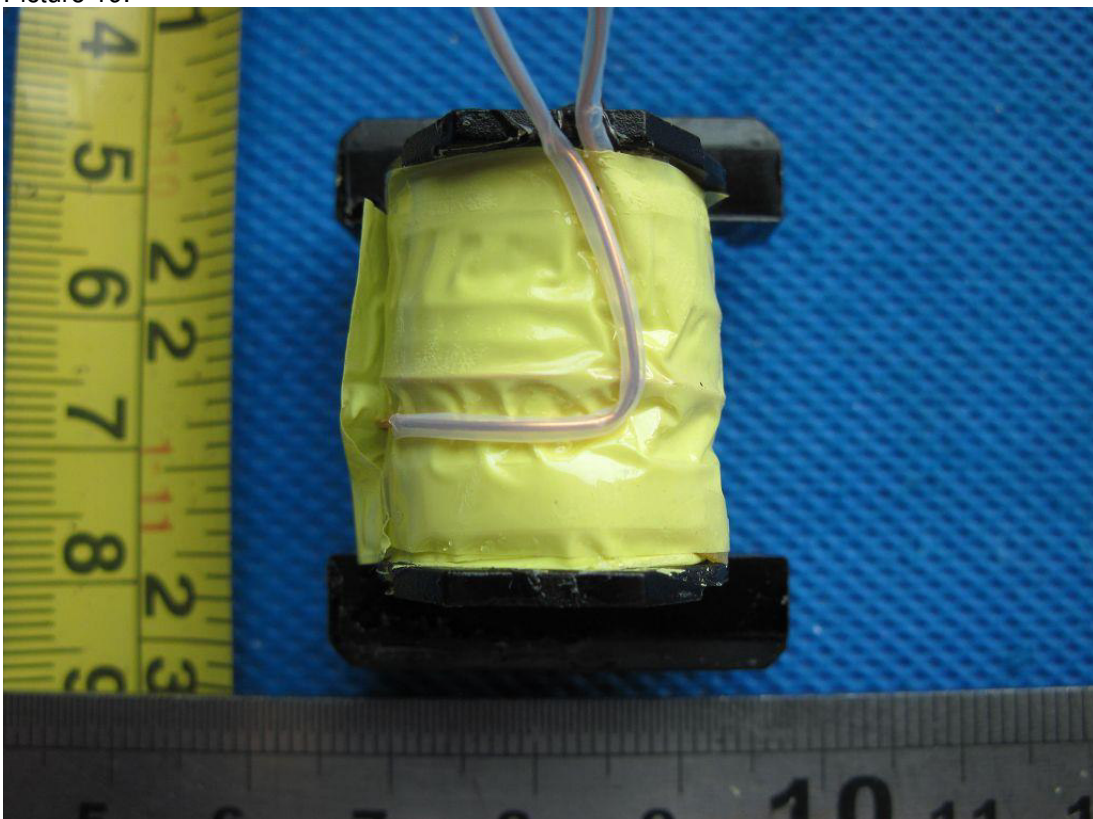
Picture 18.

Product: Active Speaker

Type Designation: X 8A, X 10A, OWL-8A, OWL-10A



Picture 19.



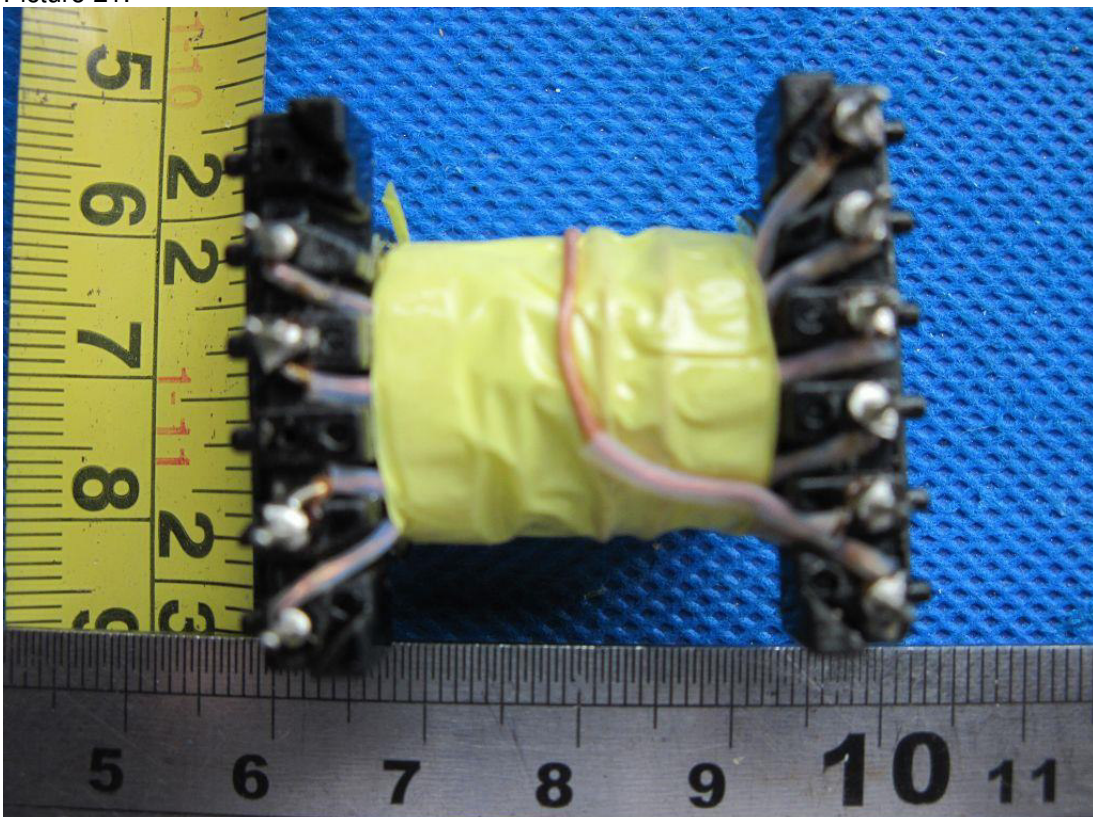
Picture 20.

Product: Active Speaker

Type Designation: X 8A, X 10A, OWL-8A, OWL-10A



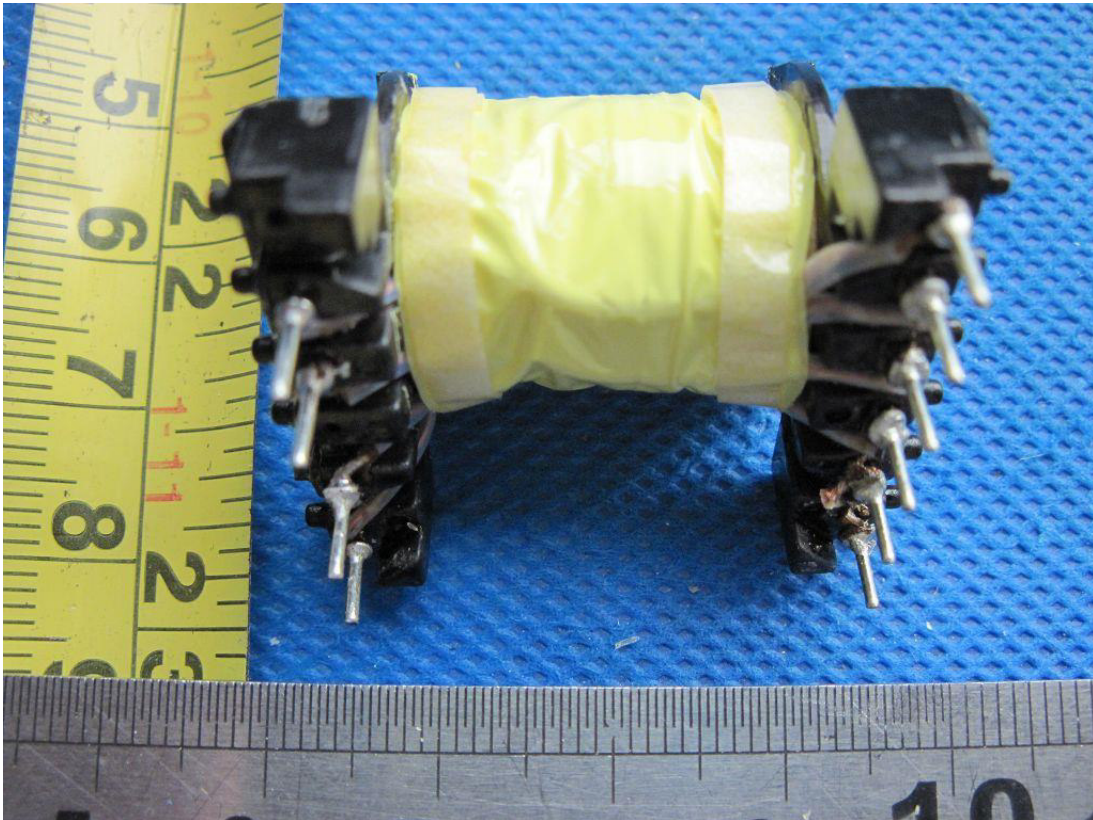
Picture 21.



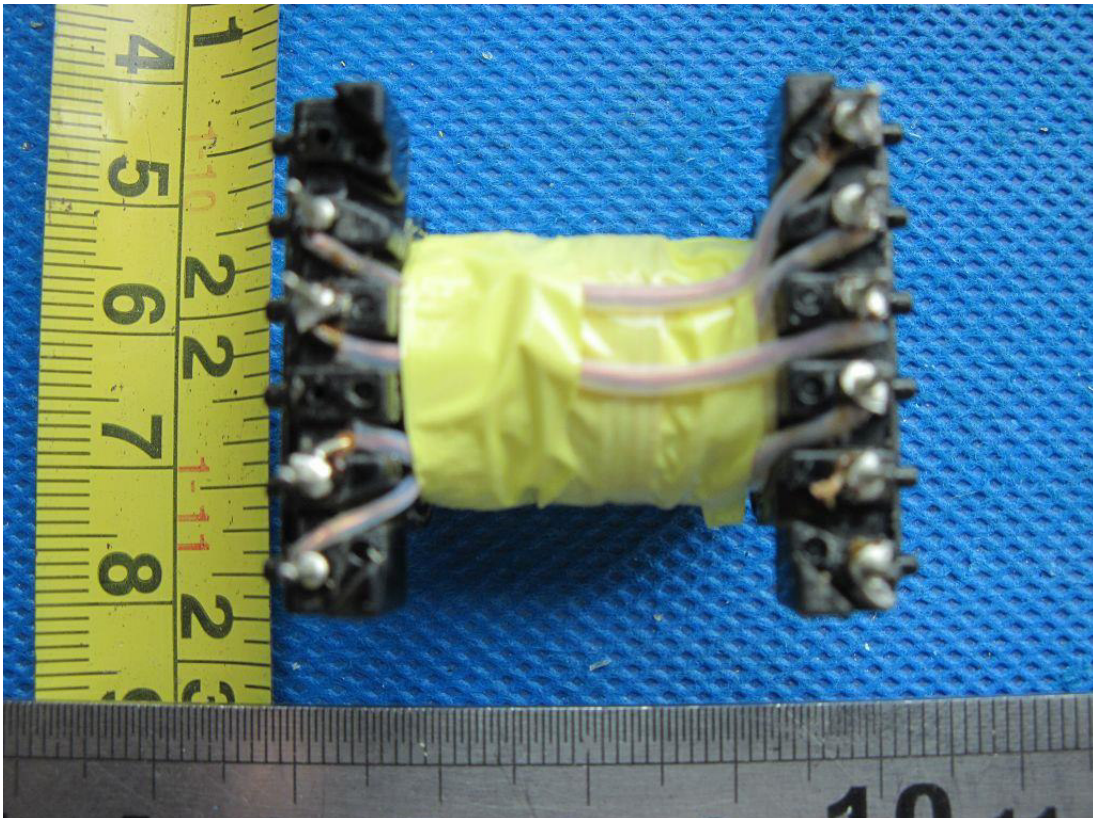
Picture 22.

Product: Active Speaker

Type Designation: X 8A, X 10A, OWL-8A, OWL-10A



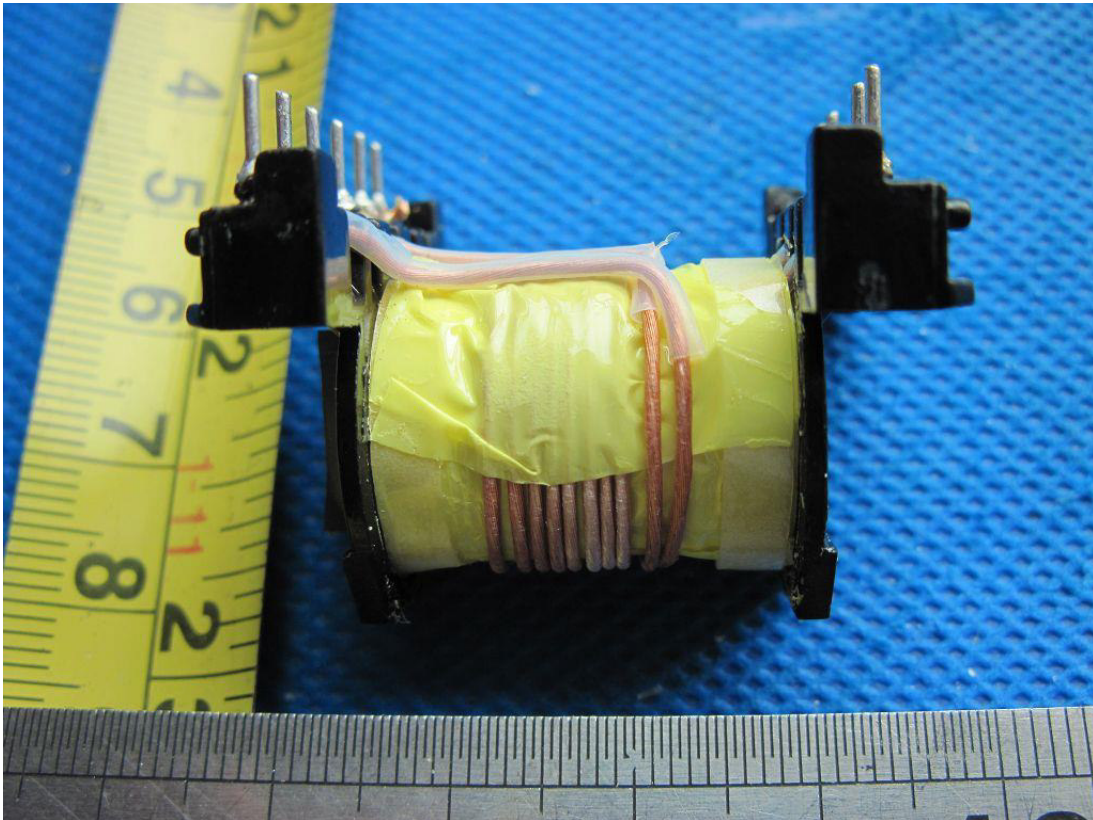
Picture 23.



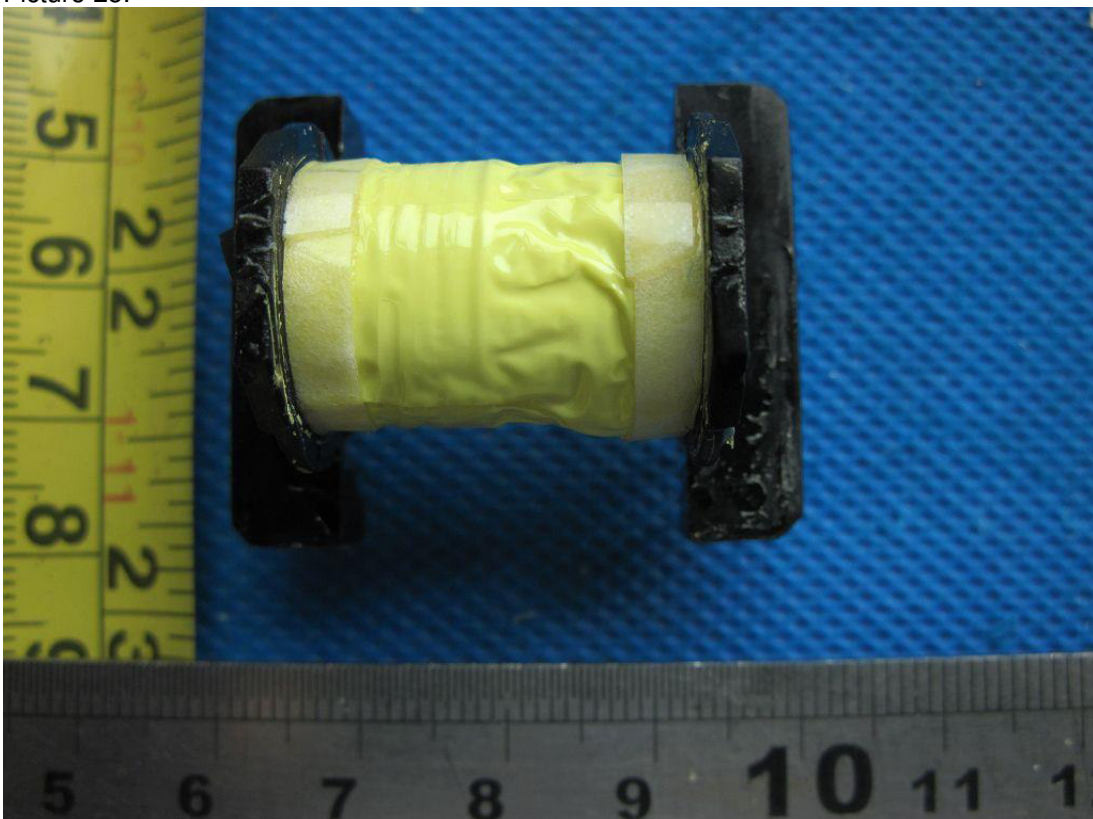
Picture 24.

Product: Active Speaker

Type Designation: X 8A, X 10A, OWL-8A, OWL-10A



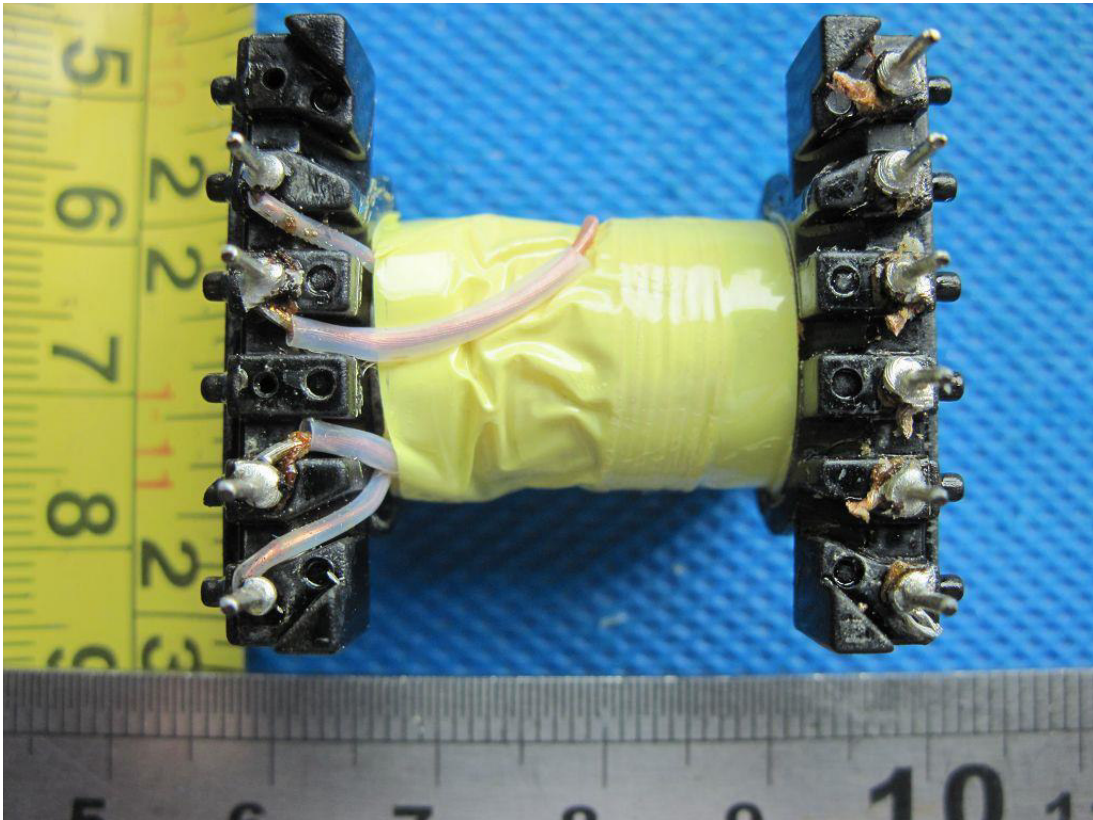
Picture 25.



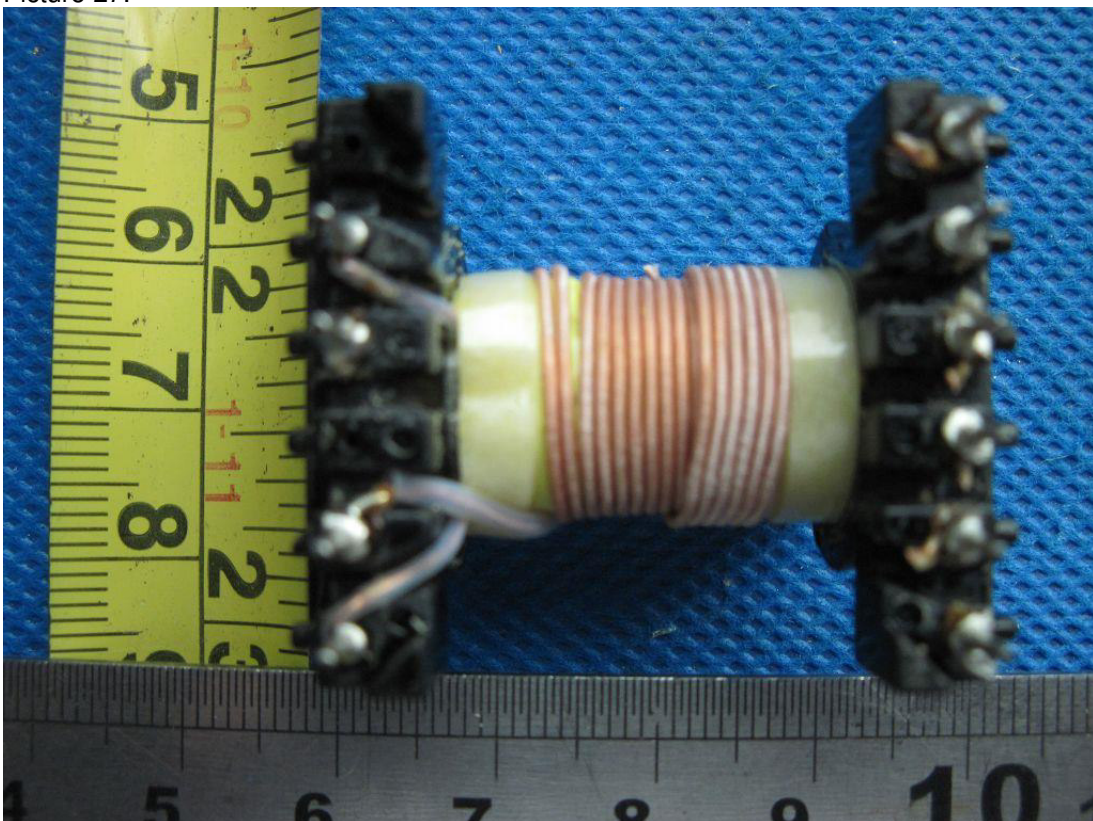
Picture 26.

Product: Active Speaker

Type Designation: X 8A, X 10A, OWL-8A, OWL-10A



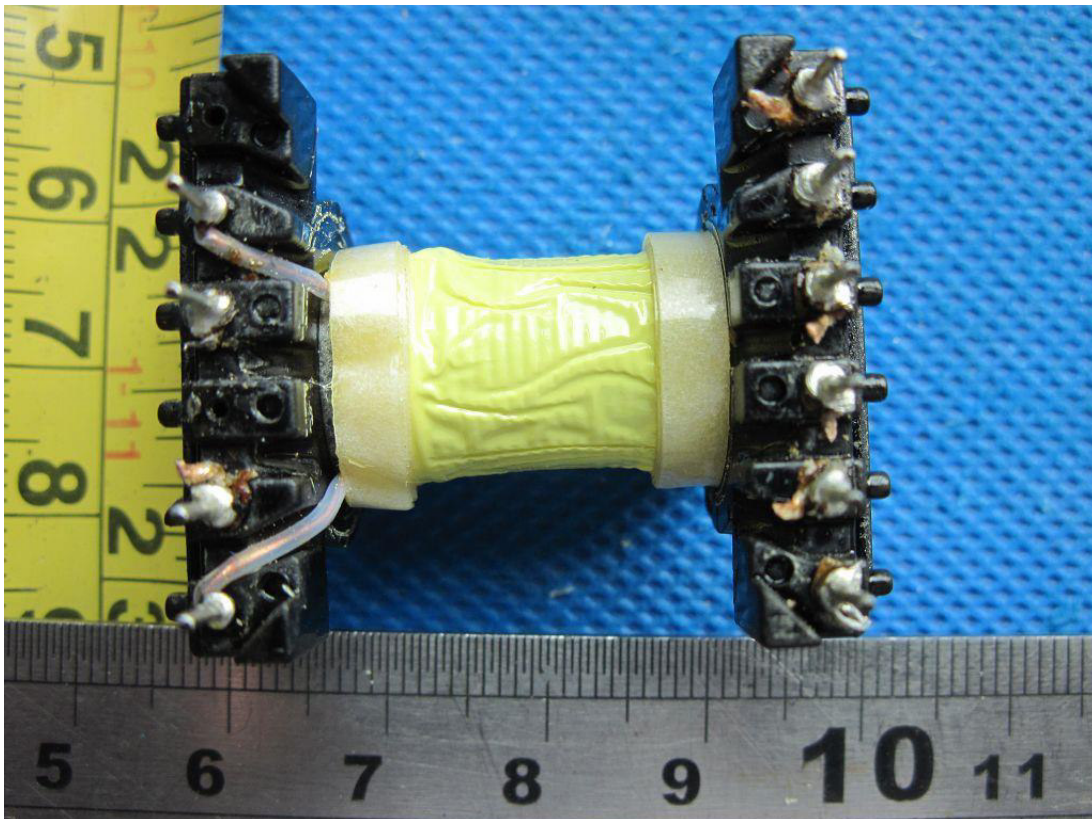
Picture 27.



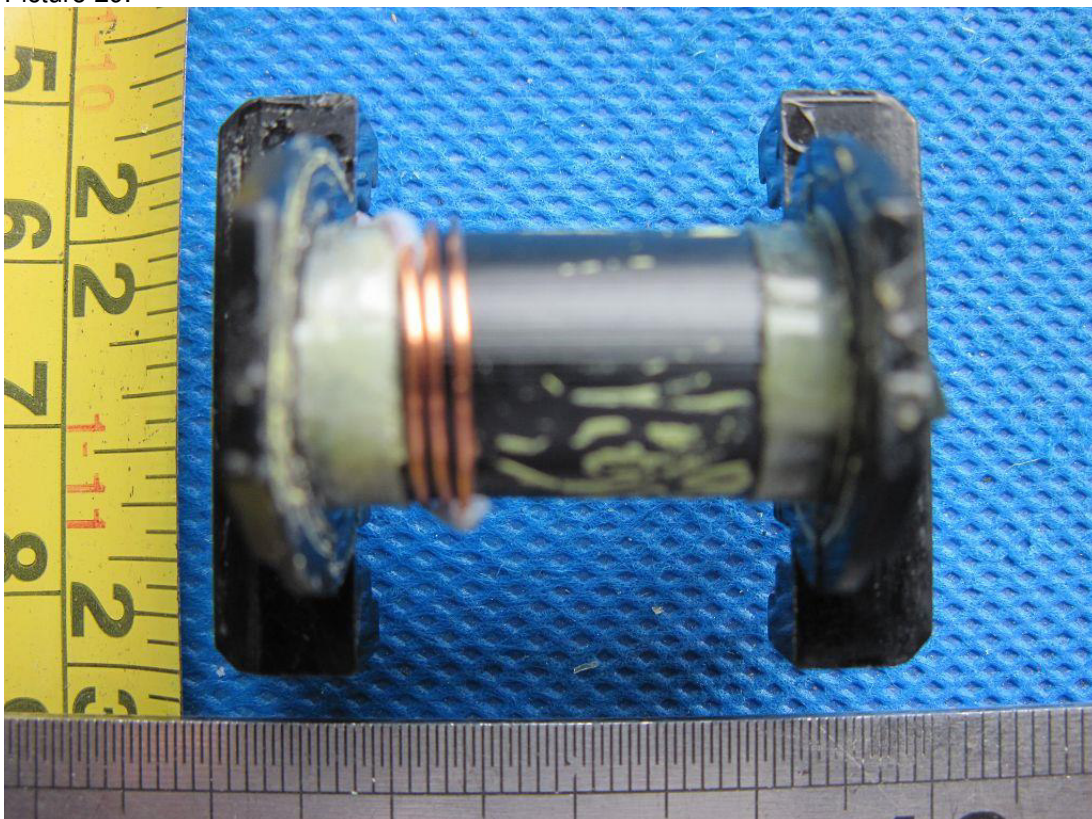
Picture 28.

Product: Active Speaker

Type Designation: X 8A, X 10A, OWL-8A, OWL-10A



Picture 29.



Picture 30.