

C E R T I F I C A T E



of Conformity
Low Voltage Directive 2014/35/EU

Registration No.: AN 50345886 0001

Report No.: 16070931 001

Holder: Seikaku Technical Group Limited
Offshore Chambers
P. O. Box 217 Apia
Samoa

Product: Audio Device
Active Speakers

Identification: TPS 16A , TPS 16AP , TPS 16A.UB ,
TPS 16AM , TPS 16AM.UB , TPS 16P

Serial no.: n.a.

Test according to: EN 60065:2014

Remark : Refer to test report 16070931 001 for details.

This certificate of conformity is based on an evaluation of a sample of the above mentioned product. Technical Report and documentation are at the Licence Holder's disposal. This is to certify that the tested sample is in conformity with Annex I of Council Directive 2014/35/EU, referred to as the Low Voltage Directive. This certificate does not imply assessment of the series-production of the product and does not permit the use of a TÜV Rheinland mark of conformity. The holder of the certificate is authorized to use this certificate in connection with the EC declaration of conformity according to Annex IV of the Directive.

Certification Body

Date 30.05.2016



TÜV Rheinland LGA Products GmbH - Tillystraße 2, 90431 Nürnberg

CE The CE marking may be used if all relevant and effective EC Directives are complied with. CE

Seikaku Technical Group Limited
Mr. Henry Li
-
Offshore Chambers
P. O. Box 217 Apia
Samoa

Date : 30.05.2016
Our ref. : SZ 05
Your ref.: 174039782

Ref : AN Certificate of Conf. Low Voltage D.

Type of Equipment : Active Speakers
Model Designation : See Certificate
Certificate No. : AN 50345886 0001
Report No. : 16070931 001

Dear Mr. Henry Li,

We herewith confirm that a sample of the above mentioned technical equipment has been tested and was found to be in accordance with the relevant requirements.

Enclosed please find your Certificate of Conformity.

We appreciate your kind support and would like to offer our assistance and continuous services in the future.

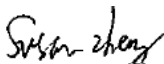

With kind regards,

Certification Body


Ramble Xie

Enclosure

证书的详细资料请登陆www.certipedia.com查阅,或拨打我司客服热线800 999 3668 / 400 883 1300咨询

Prüfbericht-Nr.: <i>Test Report No.:</i>		16070931 001	Auftrags-Nr.: <i>Order No.:</i>		174039782	Seite 1 von 2 Page 1 of 2	
Kunden-Referenz-Nr.: <i>Client Reference No.:</i>		N/A		Auftragsdatum: <i>Order date:</i>		2016-04-08	
Auftraggeber: <i>Client:</i>		Seikaku Technical Group Limited Offshore Chambers, P. O. Box 217 Apia, Samoa					
Prüfgegenstand: <i>Test item:</i>		Active Speakers					
Bezeichnung / Typ-Nr.: <i>Identification / Type No.:</i>		TPS 16A, TPS 16AP, TPS 16A.UB, TPS 16AM, TPS 16AM.UB, TPS 16P					
Auftrags-Inhalt: <i>Order content:</i>		LVD Approval					
Prüfgrundlage: <i>Test specification:</i>		EN 60065: 2014					
Wareneingangsdatum: <i>Date of receipt:</i>		2016-04-08		See photo document for detail.			
Prüfmuster-Nr.: <i>Test sample No.:</i>		Engineering sample					
Prüfzeitraum: <i>Testing period:</i>		N/A					
Ort der Prüfung: <i>Place of testing:</i>		TÜV Rheinland (Guangdong) Ltd.					
Prüflaboratorium: <i>Testing laboratory:</i>		TÜV Rheinland (Guangdong) Ltd.					
Prüfergebnis*: <i>Test result*:</i>		Pass					
geprüft von / tested by:				kontrolliert von / reviewed by:			
2016-05-30		Susan Zheng 		2016-05-30		Kevin He 	
Datum <i>Date</i>	Name / Stellung <i>Name / Position</i>	Unterschrift <i>Signature</i>	Datum <i>Date</i>	Name / Stellung <i>Name / Position</i>	Unterschrift <i>Signature</i>		
Sonstiges / Other:							
1. TÜV Rheinland LVD approval procedure;							
2. The report is based on CB report 16070930 001, no other tests are considered to be necessary.							
Zustand des Prüfgegenstandes bei Anlieferung: <i>Condition of the test item at delivery:</i>				Prüfmuster vollständig und unbeschädigt <i>Test item complete and undamaged</i>			
* Legende: 1 = sehr gut 2 = gut 3 = befriedigend 4 = ausreichend 5 = mangelhaft P(ass) = entspricht o.g. Prüfgrundlage(n) F(ail) = entspricht nicht o.g. Prüfgrundlage(n) N/A = nicht anwendbar N/T = nicht getestet							
Legend: 1 = very good 2 = good 3 = satisfactory 4 = sufficient 5 = poor P(ass) = passed a.m. test specification(s) F(ail) = failed a.m. test specification(s) N/A = not applicable N/T = not tested							
Dieser Prüfbericht bezieht sich nur auf das o.g. Prüfmuster und darf ohne Genehmigung der Prüfstelle nicht auszugsweise vervielfältigt werden. Dieser Bericht berechtigt nicht zur Verwendung eines Prüfzeichens.							
<i>This test report only relates to the a. m. test sample. Without permission of the test center this test report is not permitted to be duplicated extracts. This test report does not entitle to carry any test mark.</i>							

v04

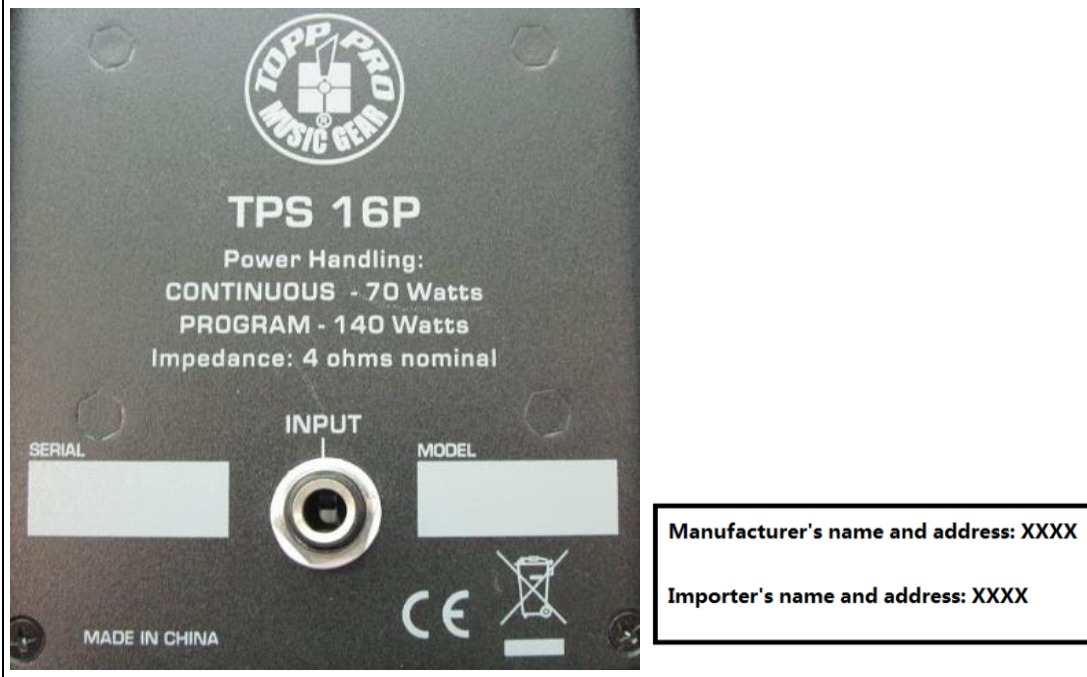
Copy of marking plates:

Labels for the model TPS 16AM.UB:



Remark: these are representative labels, the other models TPS 16A, TPS 16AP, TPS 16A.UB, TPS 16AM were identical with these ones only except for the model name.

Labels for the model TPS 16P:



Product: Active Speakers

Type Designation: TPS 16A, TPS 16AP, TPS 16A.UB, TPS 16AM, TPS 16AM.UB, TPS 16P



Picture 1. Models TPS 16AM.UB and TPS 16AP



Picture 2.

Product: Active Speakers

Type Designation: TPS 16A, TPS 16AP, TPS 16A.UB, TPS 16AM, TPS 16AM.UB, TPS 16P



Picture 3. Model TPS 16AM.UB



Picture 4.

Product: Active Speakers

Type Designation: TPS 16A, TPS 16AP, TPS 16A.UB, TPS 16AM, TPS 16AM.UB, TPS 16P



Picture 5.



Picture 6.

Product: Active Speakers

Type Designation: TPS 16A, TPS 16AP, TPS 16A.UB, TPS 16AM, TPS 16AM.UB, TPS 16P



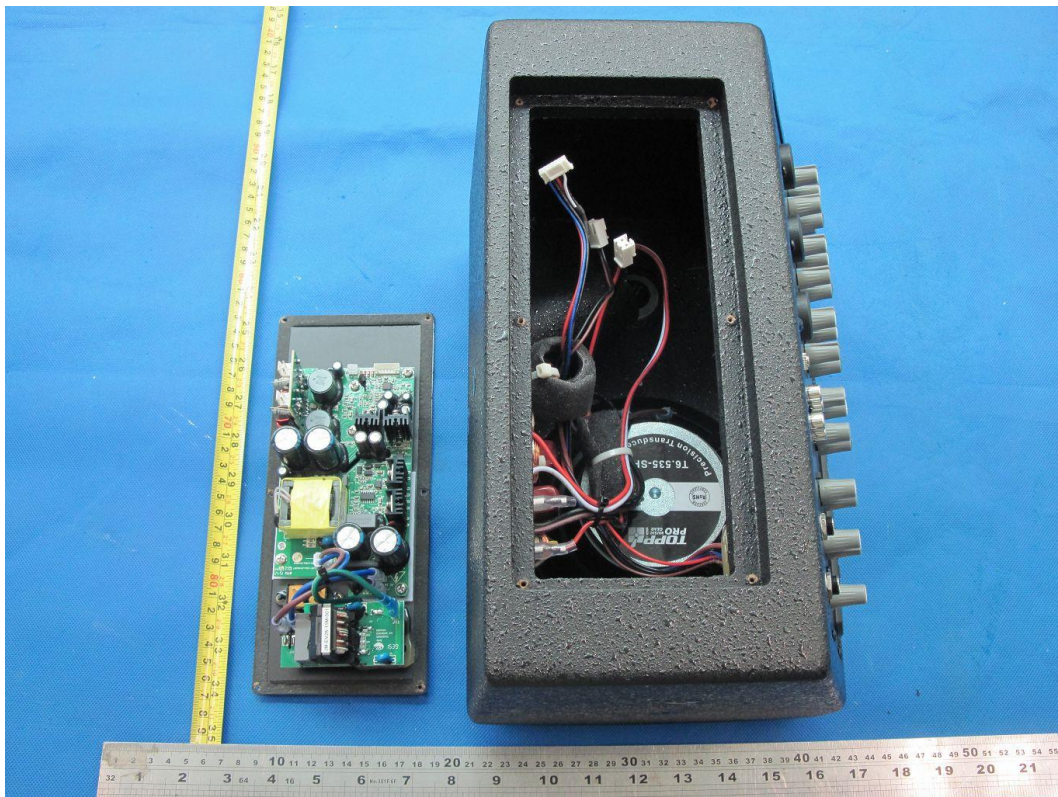
Picture 7.



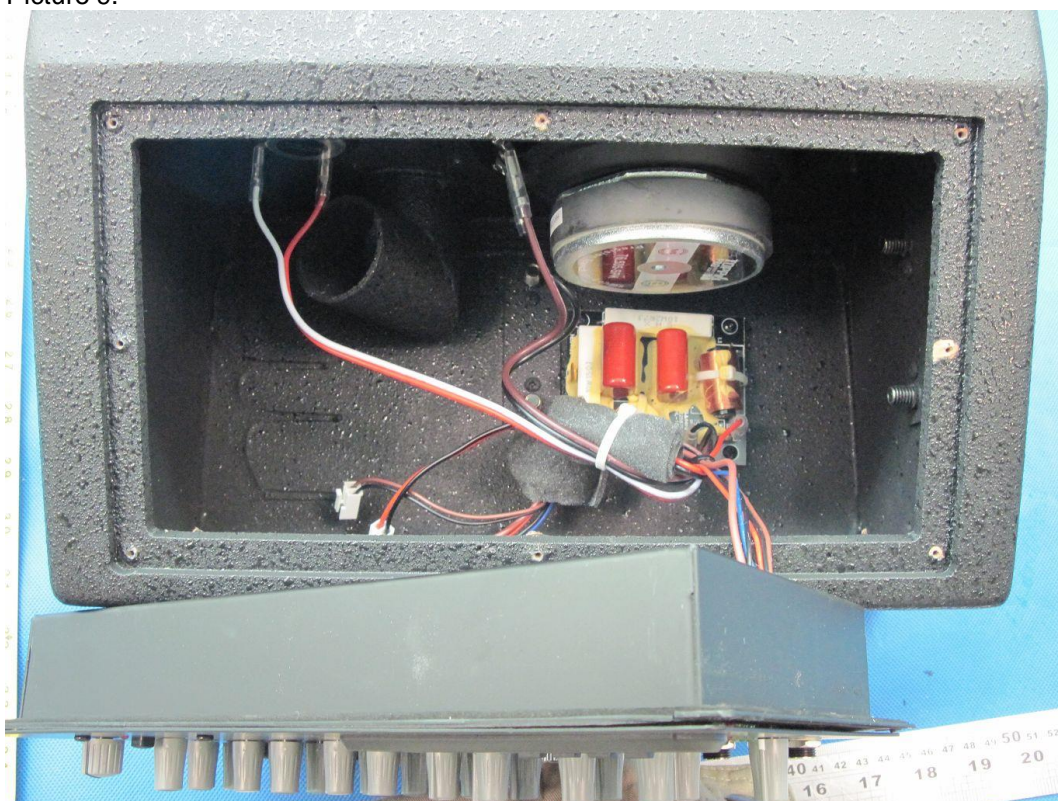
Picture 8.

Product: Active Speakers

Type Designation: TPS 16A, TPS 16AP, TPS 16A.UB, TPS 16AM, TPS 16AM.UB, TPS 16P



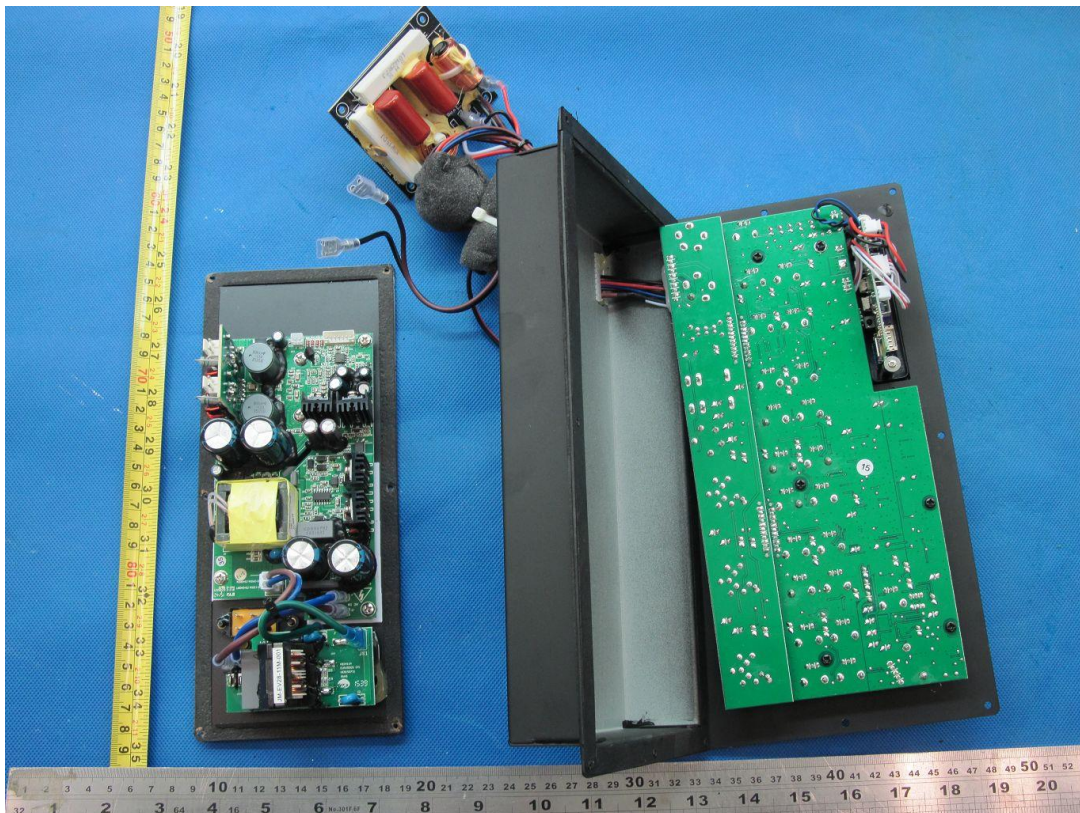
Picture 9.



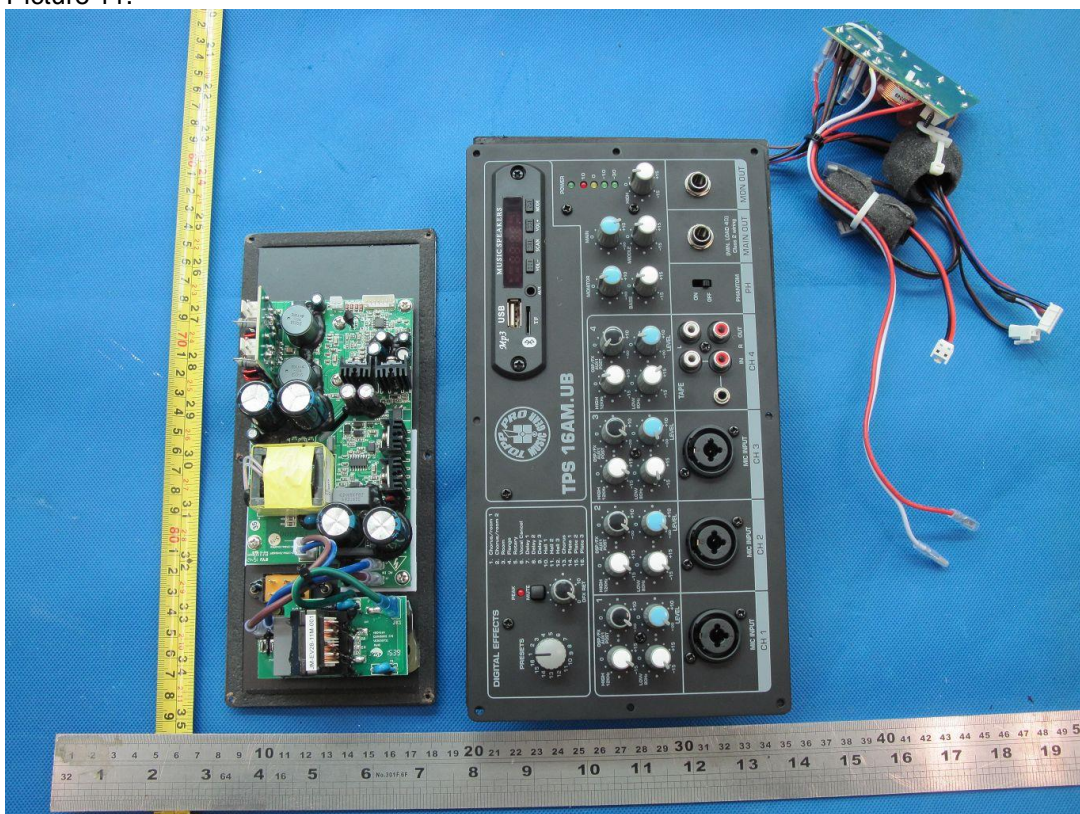
Picture 10.

Product: Active Speakers

Type Designation: TPS 16A, TPS 16AP, TPS 16A.UB, TPS 16AM, TPS 16AM.UB, TPS 16P



Picture 11.



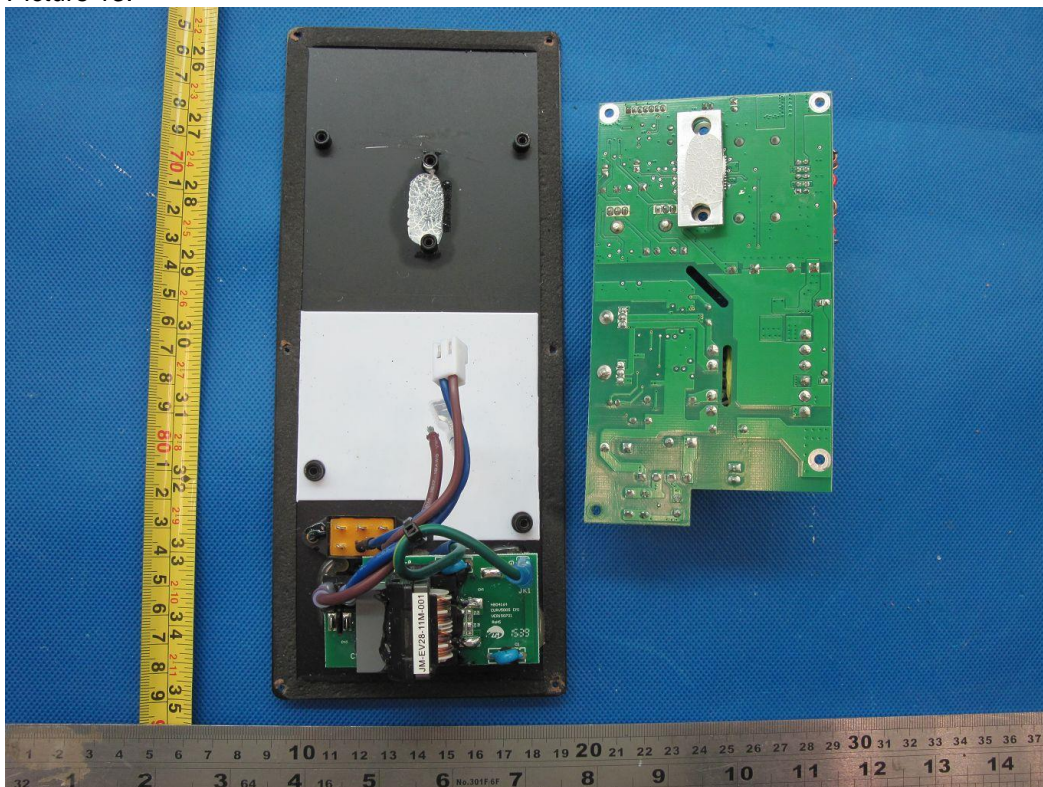
Picture 12.

Product: Active Speakers

Type Designation: TPS 16A, TPS 16AP, TPS 16A.UB, TPS 16AM, TPS 16AM.UB, TPS 16P



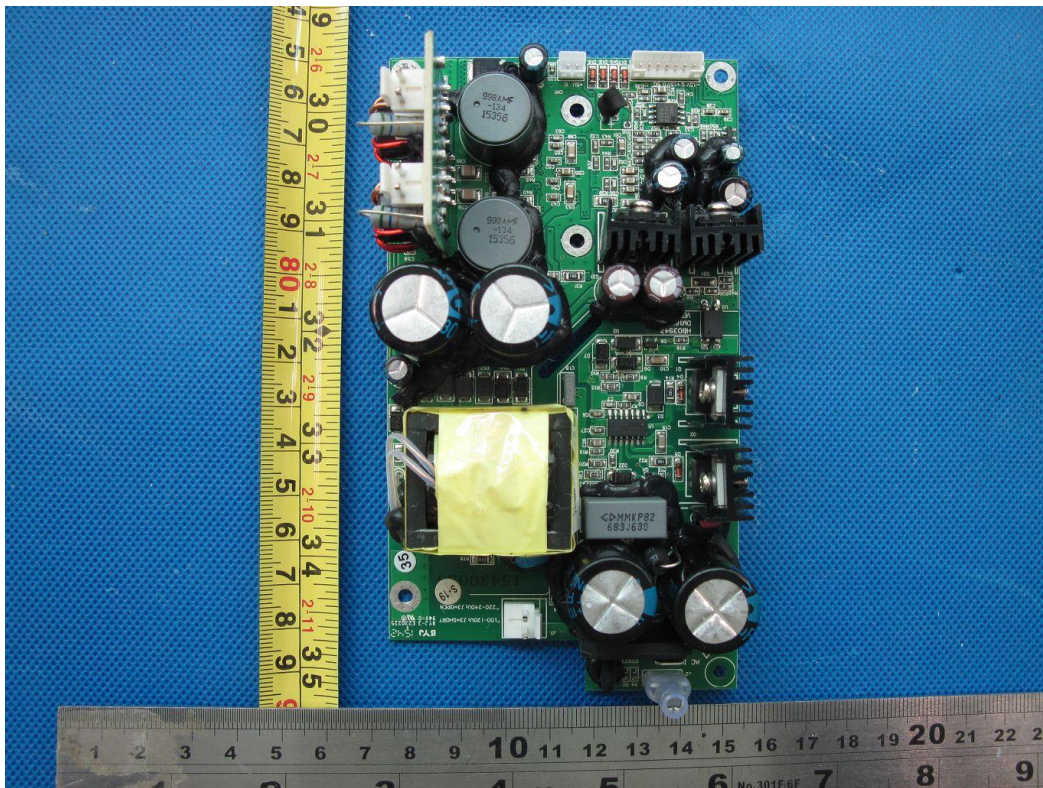
Picture 13.



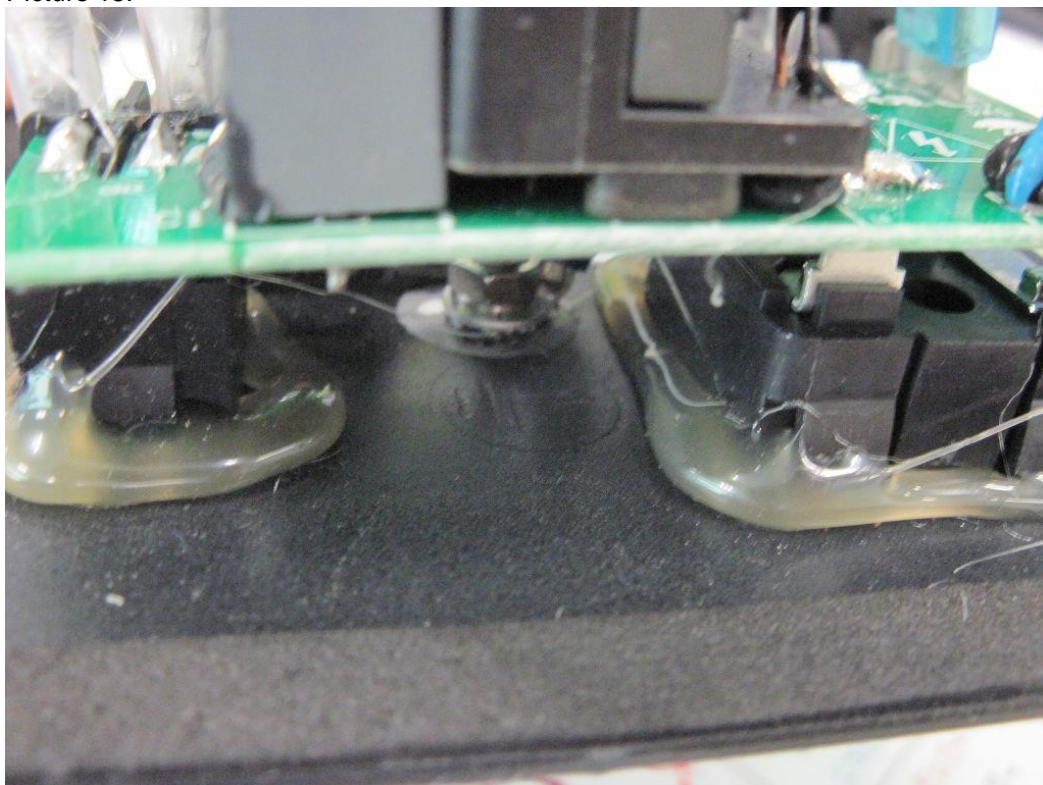
Picture 14.

Product: Active Speakers

Type Designation: TPS 16A, TPS 16AP, TPS 16A.UB, TPS 16AM, TPS 16AM.UB, TPS 16P



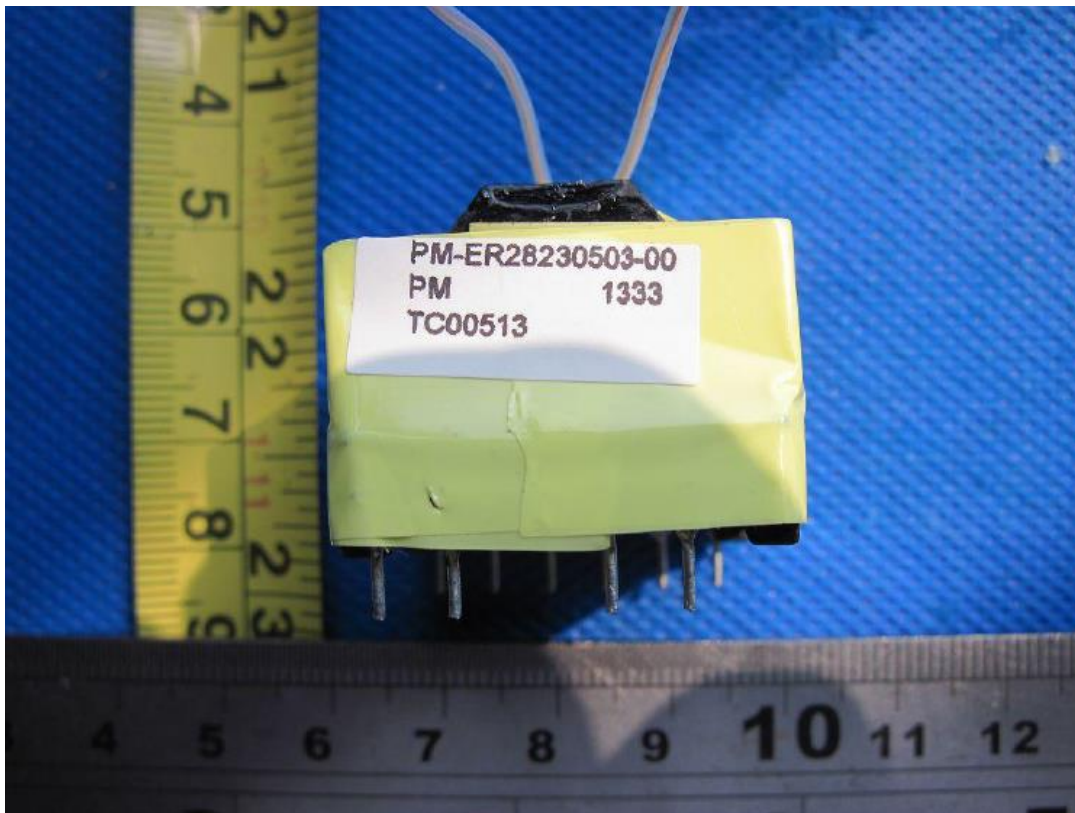
Picture 15.



Picture 16.

Product: Active Speakers

Type Designation: TPS 16A, TPS 16AP, TPS 16A.UB, TPS 16AM, TPS 16AM.UB, TPS 16P



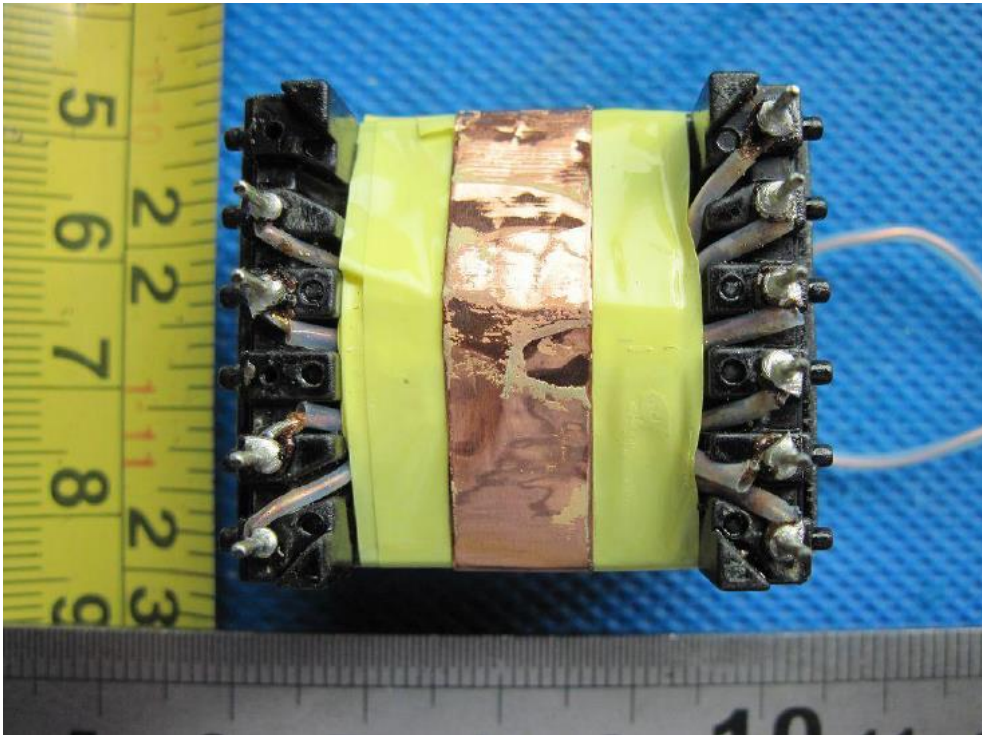
Picture 17.



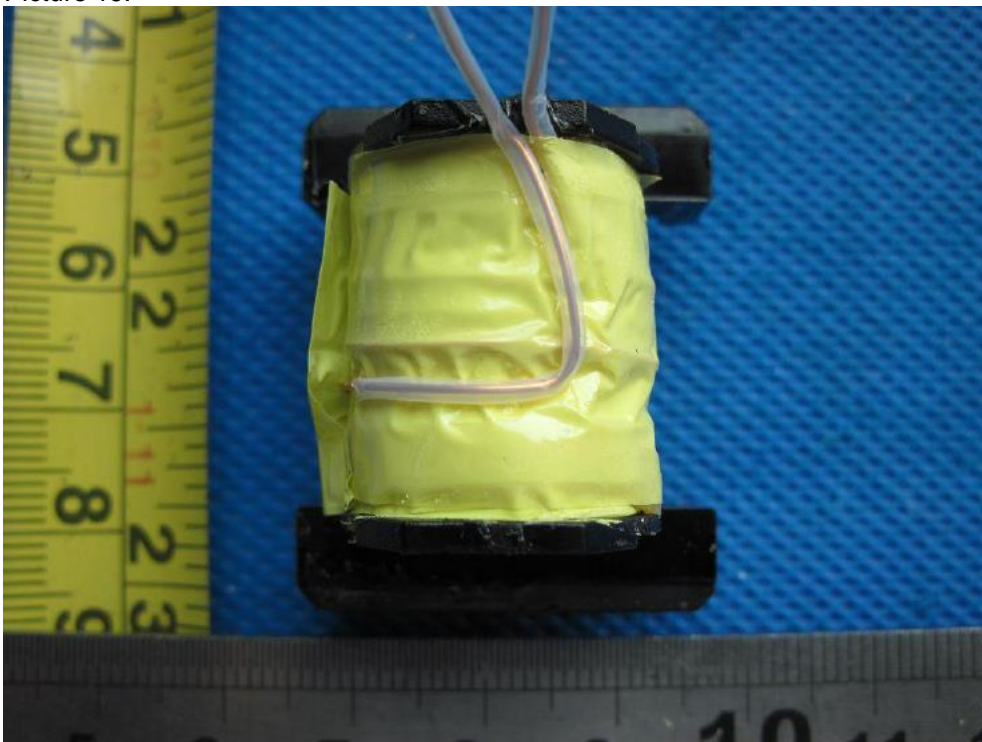
Picture 18.

Product: Active Speakers

Type Designation: TPS 16A, TPS 16AP, TPS 16A.UB, TPS 16AM, TPS 16AM.UB, TPS 16P



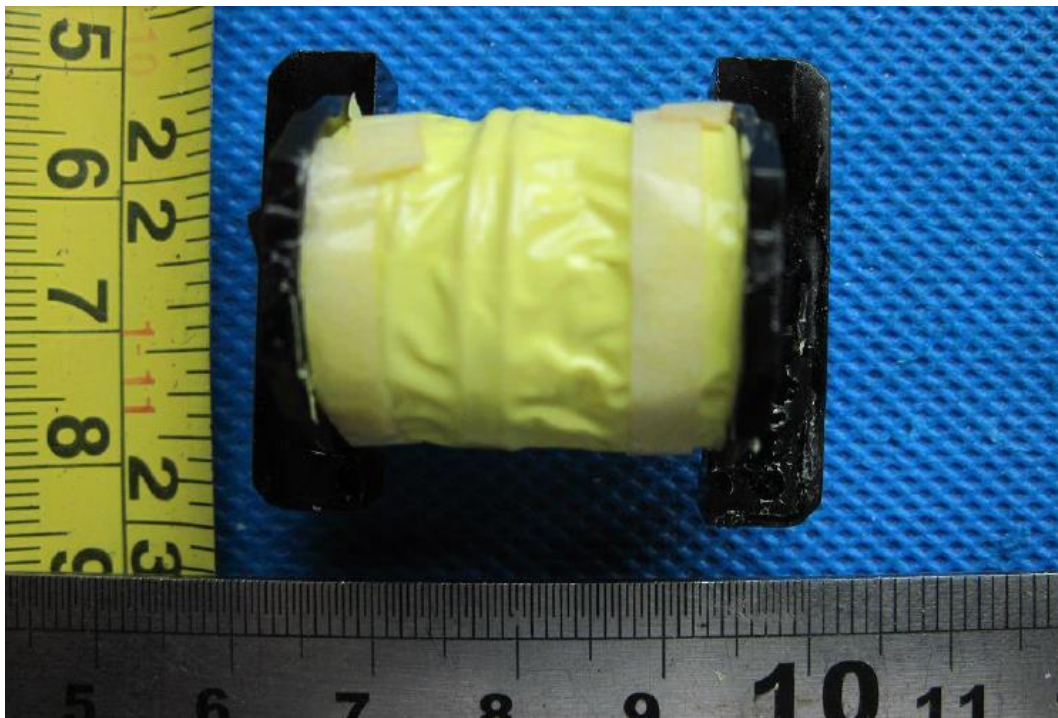
Picture 19.



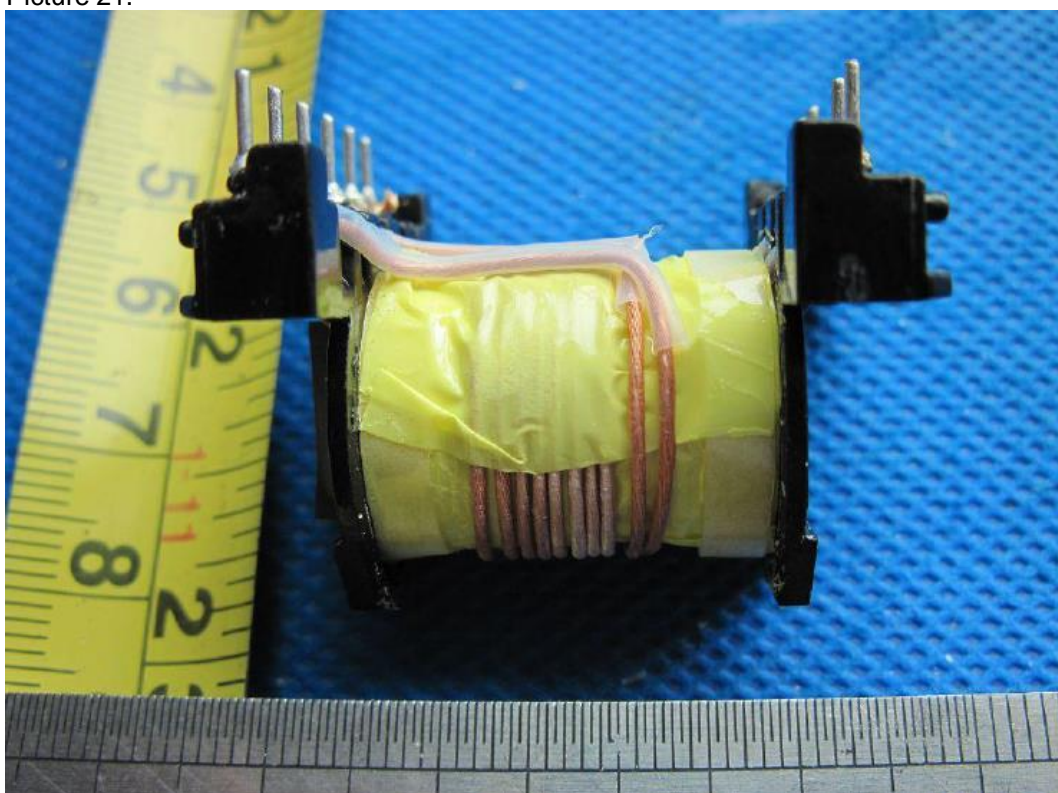
Picture 20.

Product: Active Speakers

Type Designation: TPS 16A, TPS 16AP, TPS 16A.UB, TPS 16AM, TPS 16AM.UB, TPS 16P



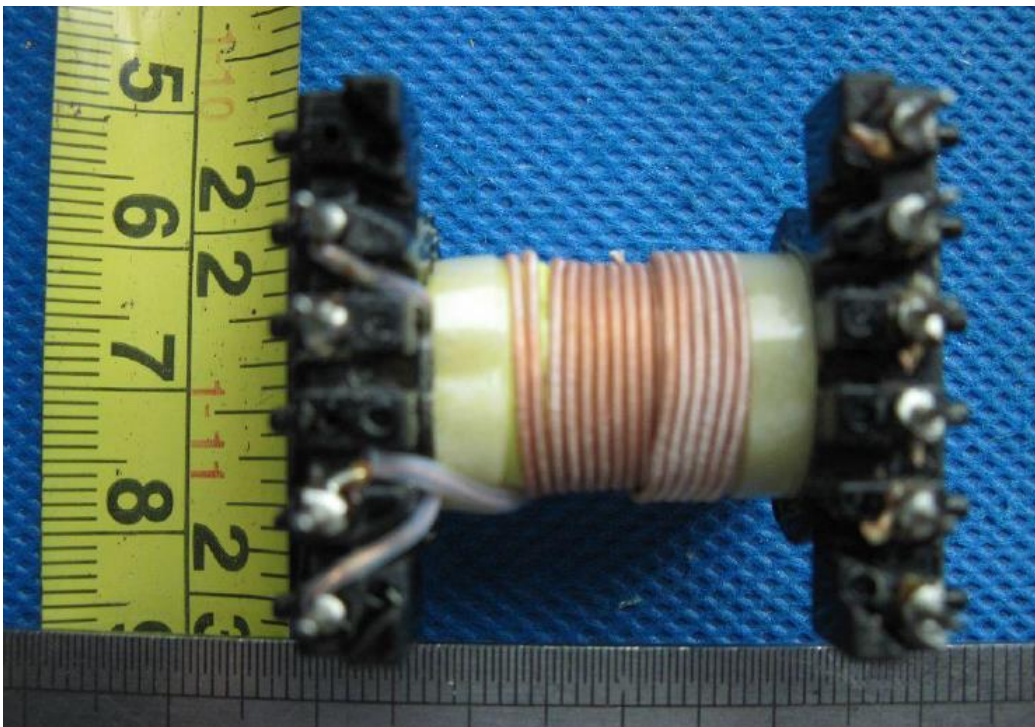
Picture 21.



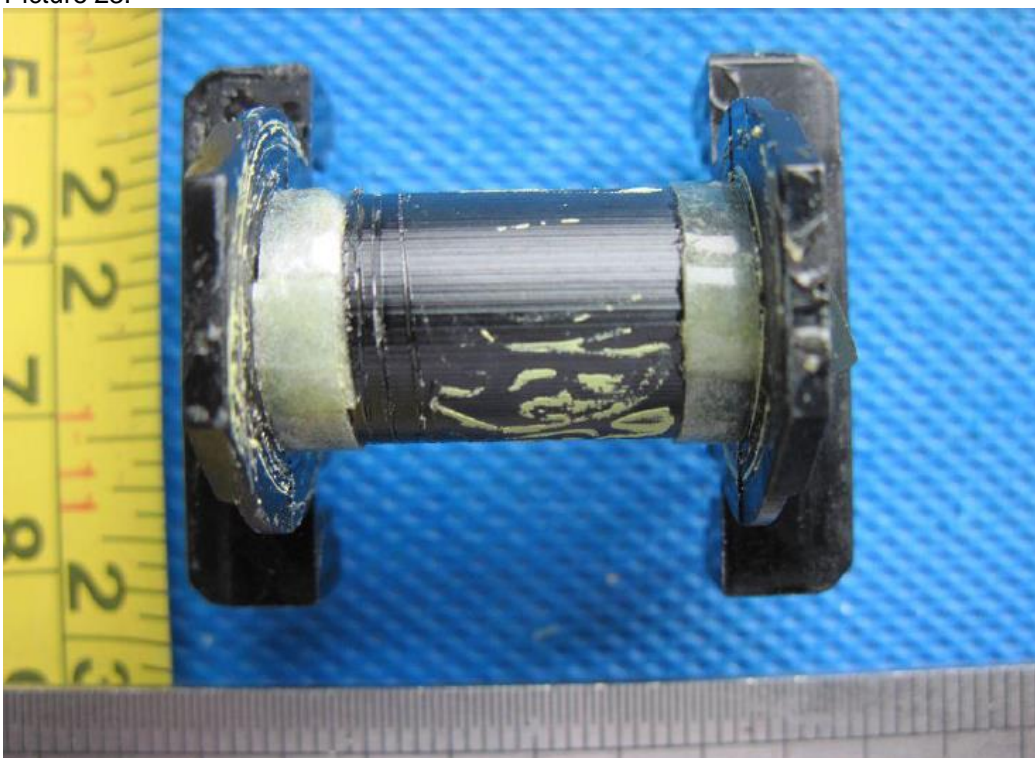
Picture 22.

Product: Active Speakers

Type Designation: TPS 16A, TPS 16AP, TPS 16A.UB, TPS 16AM, TPS 16AM.UB, TPS 16P



Picture 23.



Picture 24.

Product: Active Speakers

Type Designation: TPS 16A, TPS 16AP, TPS 16A.UB, TPS 16AM, TPS 16AM.UB, TPS 16P



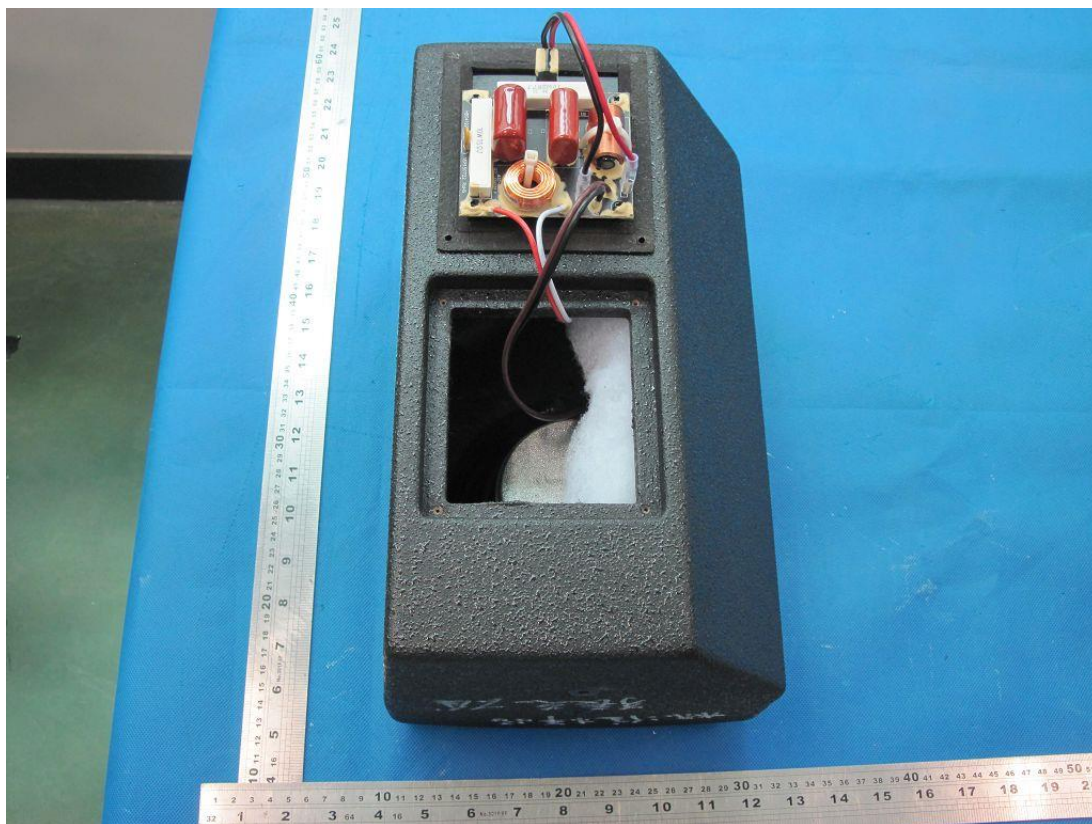
Picture 25. Model TPS 16P



Picture 26.

Product: Active Speakers

Type Designation: TPS 16A, TPS 16AP, TPS 16A.UB, TPS 16AM, TPS 16AM.UB, TPS 16P



Picture 27.